

XTREME BOATS

LIGHTER, STRONGER, FASTER
FOR THE HIGHEST PERFORMANCE

TOTAL PERFORMANCE REPORT

WWW.XTREMEBOATS.COM

850-547-9500

TEST DAY DATA

Test Date	Oct-13
Test Conductor(s)	BH
Boat Weight As Tested	1225
Air Temperature	75F
Elevation	160
Wind Velocity	15
Fresh/Salt Water	Fresh
Weight of Persons during Test	225



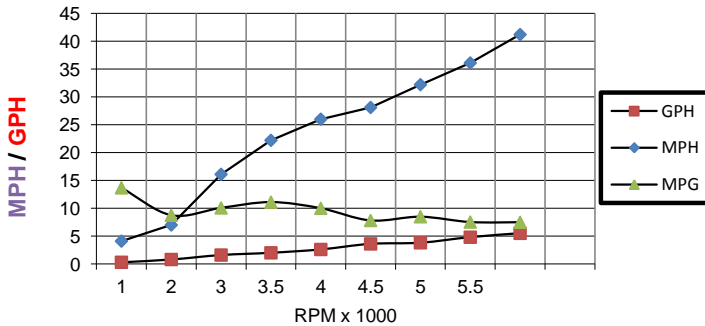
PERFORMANCE SUMMARY

Top Speed (MPH @ RPM)	41.2
Acceleration 0 - 20 MPH (Seconds)	N/A
Acceleration 0 - 30 MPH (Seconds)	N/A
Best Fuel Efficiency (MPG @ MPH)	11.1 @ 22.2MPH

ENGINE SPECIFICATIONS

Engine	Mercury 60	ELPT
Horsepower	60	
Cylinders	4	
Gear Ratio	1.83	

PERFORMANCE CURVE



PERFORMANCE DATA

RPM x 1000	SPEED MPH	FUEL GPH	FUEL MPG
1	4.1	0.3	13.7
2	7	0.8	8.8
3	16.1	1.6	10.1
3.5	22.2	2.0	11.1
4	26	2.6	10.0
4.5	28.1	3.6	7.8
5	32.2	3.8	8.5
5.5	36.1	4.8	7.5
6.15	41.2	5.5	7.5

BOAT SPECIFICATIONS

Boat Model	Classic 1454 SST
Bottom Style	Jet Tunnel (Run w Prop)
Material	Welded Aluminum
Length	14'1"
Beam	81"
Bottom Width	54"
Hull Bottom Thickness	0.125" Aluminum (1/8")
Max HP Capacity	60HP
Fuel Tank	Topside
Steering Type	Stick Steering
Dry Boat Weight	525
Transom Height	22"

PROPELLER SPECIFICATIONS

Brand	Mercury
Model	Vengeance
Material	SS
Diameter/Pitch	10.38/15
Number of Blades	3

Performance Calculations

Propeller Slippage at WOT	13.60%
Hull Factor (Efficiency)	184.30
Higher = More Efficient	

Xtreme Industries 1326 Old Ridge Road Bonifay, FL 32425

Results on individual boats may vary depending on many factors, including weather and the condition of propeller, lower unit and boat bottom.

850-547-9500 XtremeBoats.com