

XTREME BOATS

LIGHTER, STRONGER, FASTER
FOR THE HIGHEST PERFORMANCE

TOTAL PERFORMANCE REPORT

WWW.XTREMEBOATS.COM

850-547-9500

TEST DAY DATA

Test Date	Jan-14
Test Conductor(s)	BH
Boat Weight As Tested	1080
Air Temperature	48F
Elevation	60
Wind Velocity	8
Fresh/Salt Water	Fresh
Weight of Persons/Ballast during Test	225



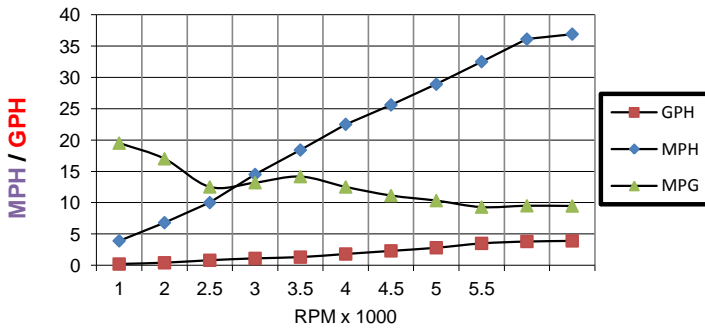
PERFORMANCE SUMMARY

Top Speed (MPH @ RPM)	36.9
Acceleration 0 - 20 MPH (Seconds)	4.9s
Acceleration 0 - 30 MPH (Seconds)	9.9s
Best Fuel Efficiency (MPG @ MPH)	14.2 @ 18.4 mph

ENGINE SPECIFICATIONS

Engine	Mercury 40	ELPT
Horsepower	40	
Cylinders	4	
Gear Ratio	2.00	

PERFORMANCE CURVE



BOAT SPECIFICATIONS

Boat Model	River Skiff 1645 SS
Bottom Style	Flat w 4 Keels
Material	Welded Aluminum
Length	15'9"
Beam	68"
Bottom Width	45"
Hull Bottom Thickness	0.125" Aluminum (1/8")
Max HP Capacity	40HP
Fuel Tank	Topside
Steering Type	Stick Steering
Dry Boat Weight	495
Transom Height	22"

PERFORMANCE DATA

RPM x 1000	SPEED MPH	FUEL GPH	FUEL MPG
1	3.9	0.2	19.5
2	6.8	0.4	17.0
2.5	10	0.8	12.5
3	14.5	1.1	13.2
3.5	18.4	1.3	14.2
4	22.5	1.8	12.5
4.5	25.6	2.3	11.1
5	28.9	2.8	10.3
5.5	32.5	3.5	9.3
6	36.1	3.8	9.5
6.1	36.9	3.9	9.5

PROPELLER SPECIFICATIONS

Brand	Mercury
Model	Vengeance
Material	SS
Diameter/Pitch	10.38/14
Number of Blades	3

Performance Calculations

Propeller Slippage at WOT	8.80%
Hull Factor (Efficiency)	191.7
Higher = More Efficient	

Plane @ 3,000 6,100 Trimmed out to Maximum

Xtreme Industries 1326 Old Ridge Road Bonifay, FL 32425

Results on individual boats may vary depending on many factors, including weather and the condition of propeller, lower unit and boat bottom.

850-547-9500 XtremeBoats.com