

XTREME BOATS

LIGHTER, STRONGER, FASTER
FOR THE HIGHEST PERFORMANCE

TOTAL PERFORMANCE REPORT

WWW.XTREMEBOATS.COM

850-547-9500

TEST DAY DATA

Test Date	Dec-12
Test Conductor(s)	BH/AF
Boat Weight As Tested	1870
Air Temperature	55F
Elevation	160
Wind Velocity	5
Fresh/Salt Water	Fresh
Weight of Persons during Test	325



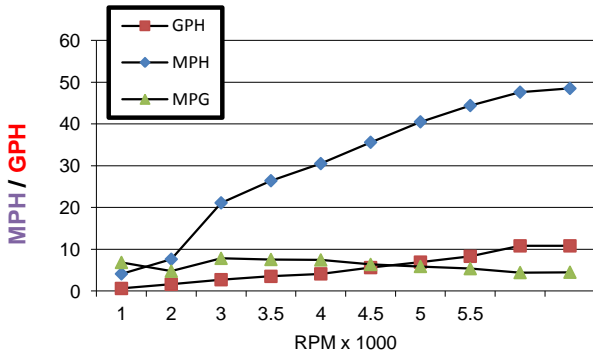
PERFORMANCE SUMMARY

Top Speed (MPH @ RPM)	48.5
Acceleration 0 - 20 MPH (Seconds)	4.9
Acceleration 0 - 30 MPH (Seconds)	6.9
Best Fuel Efficiency (MPG @ MPH)	7.8 @ 21.1 MPH

ENGINE SPECIFICATIONS

Engine	Mercury 90	ELPT
Horsepower	90	
Cylinders	4	
Gear Ratio	2.33	

PERFORMANCE CURVE



PERFORMANCE DATA

RPM	SPEED	FUEL	FUEL
x 1000	MPH	GPH	MPG
1	4.1	0.6	6.8
2	7.6	1.6	4.8
3	21.1	2.7	7.8
3.5	26.4	3.5	7.5
4	30.5	4.1	7.4
4.5	35.6	5.6	6.4
5	40.5	6.9	5.9
5.5	44.4	8.3	5.3
6	47.6	10.8	4.4
6050	48.5	10.8	4.5

BOAT SPECIFICATIONS

Boat Model	XT 182 SC
Bottom Style	Full V w Vented Keels
Material	Welded Aluminum
Length	18'2"
Beam	88"
Bottom Width	60"
Hull Bottom Thickness	0.190" (3/16") Aluminum
Max HP Capacity	115 HP
Fuel Tank	Topside
Steering Type	Console/Wheel
Dry Boat Weight	895
Transom Height	22"

PROPELLER SPECIFICATIONS

Brand	Mercury
Model	Laser II
Material	SS
Diameter/Pitch	13.25/21
Number of Blades	3

Performance Calculations

Propeller Slippage at WOT	6.07%
Hull Factor (Efficiency)	221.08
Higher = More Efficient	

Xtreme Industries 1326 Old Ridge Road Bonifay, FL 32425

Results on individual boats may vary depending on many factors, including weather and the condition of propeller, lower unit and boat bottom.

850-547-9500 XtremeBoats.com